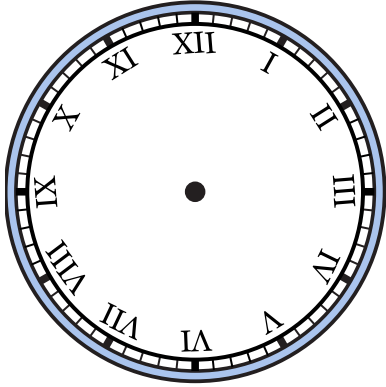


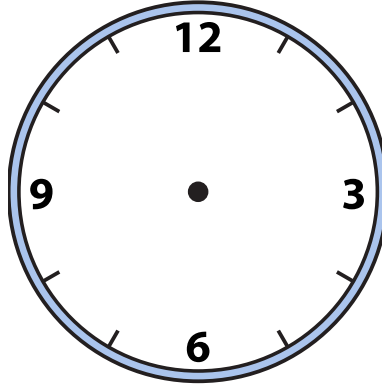


Draw the hour and minute hand on the clocks so they represent the time shown.

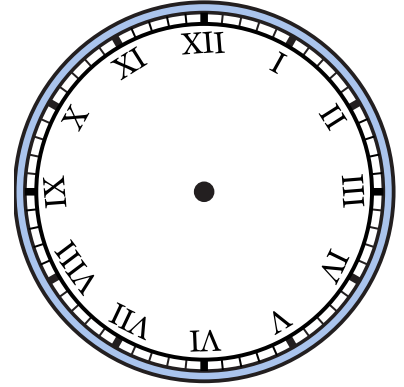
1) 3:00



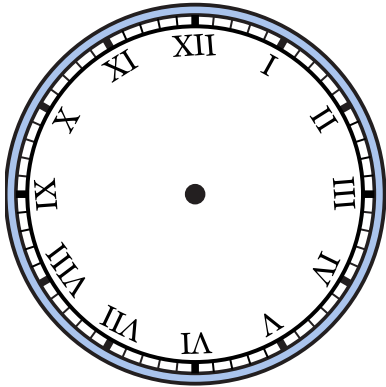
2) 4:20



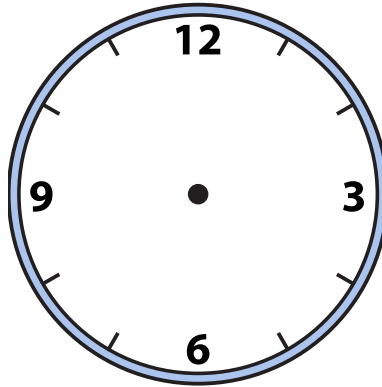
3) 7:10



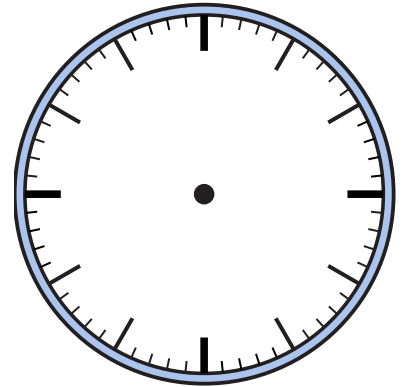
4) 12:30



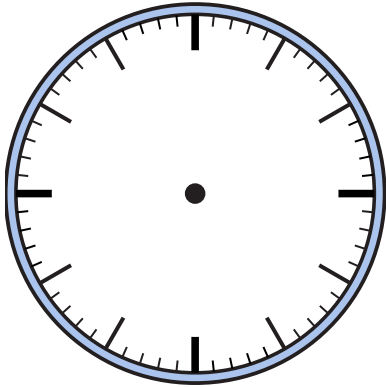
5) 2:55



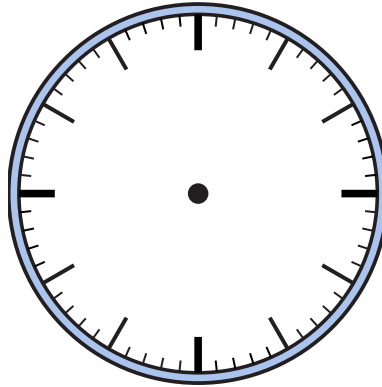
6) 5:00



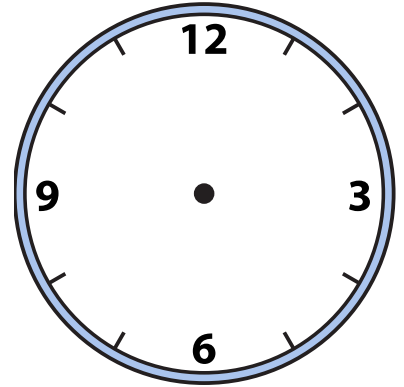
7) 1:05



8) 12:20



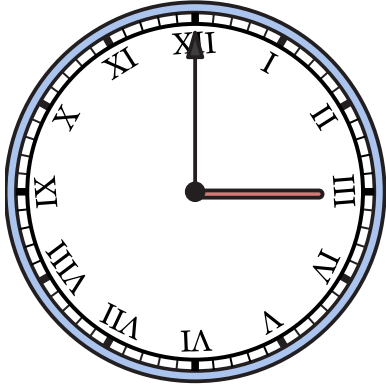
9) 8:25



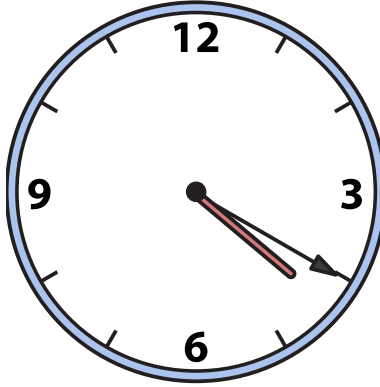


Draw the hour and minute hand on the clocks so they represent the time shown.

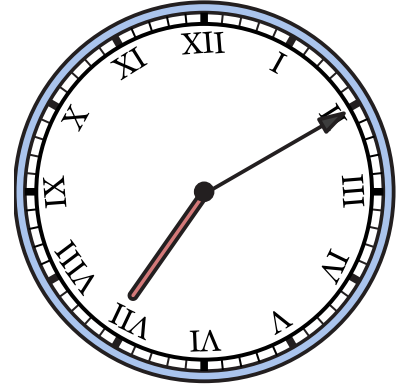
1) 3:00



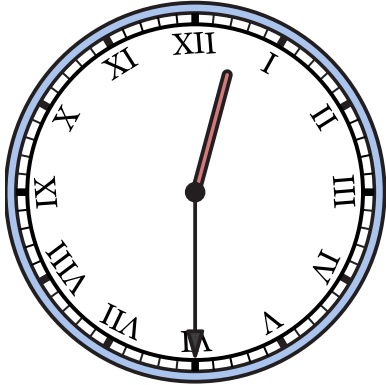
2) 4:20



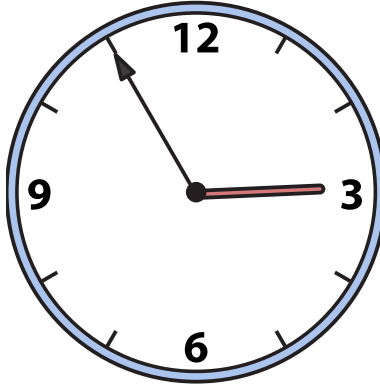
3) 7:10



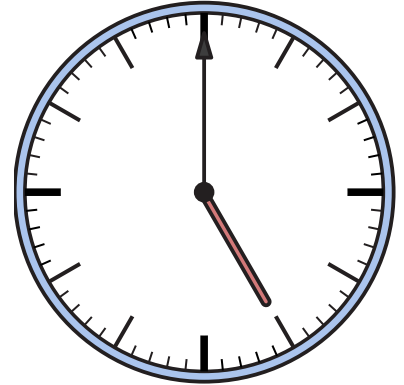
4) 12:30



5) 2:55



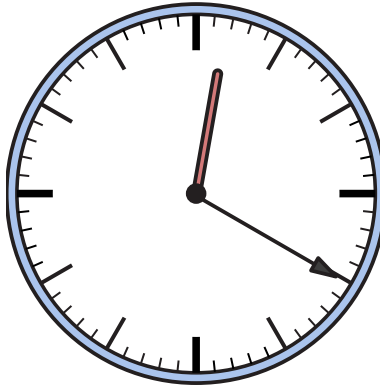
6) 5:00



7) 1:05



8) 12:20



9) 8:25

