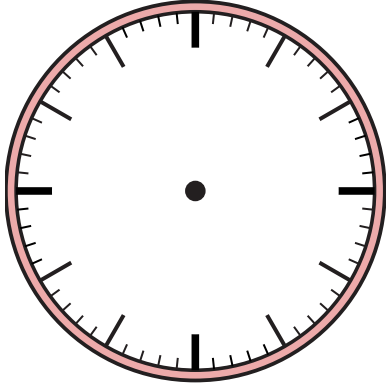


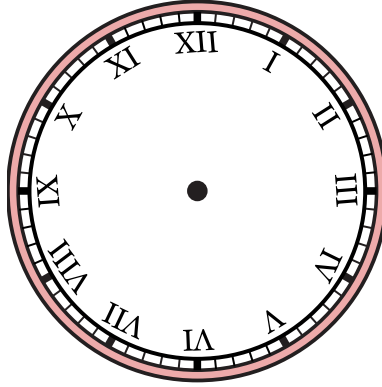


Draw the hour and minute hand on the clocks so they represent the time shown.

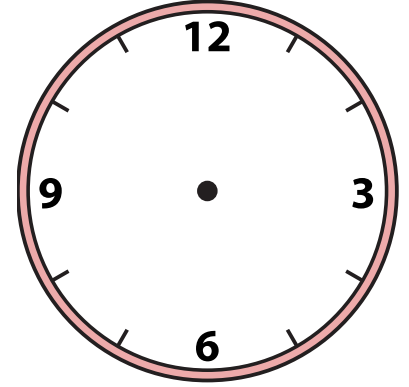
1) 11:50



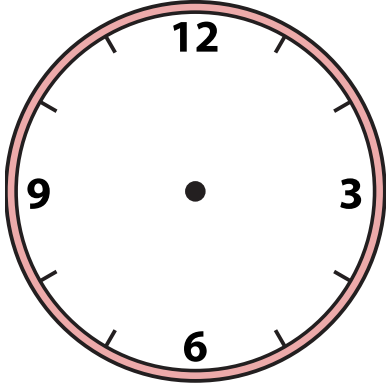
2) 8:45



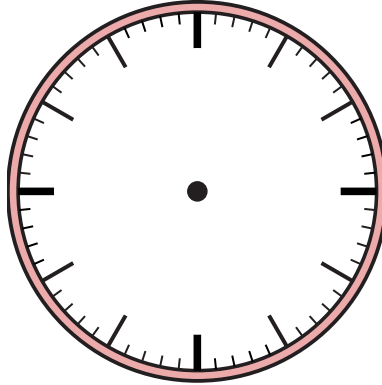
3) 1:22



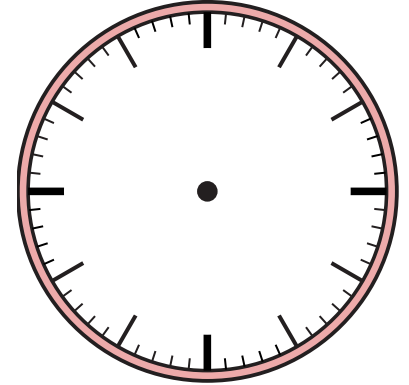
4) 10:31



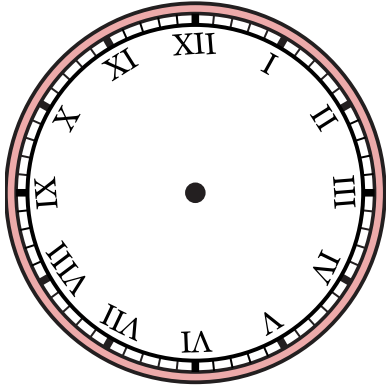
5) 12:45



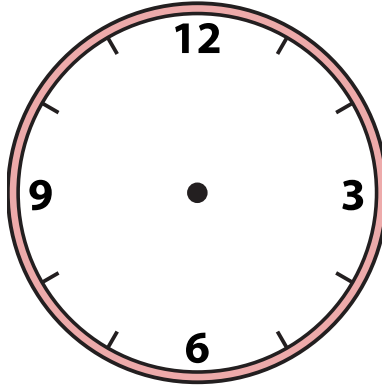
6) 12:30



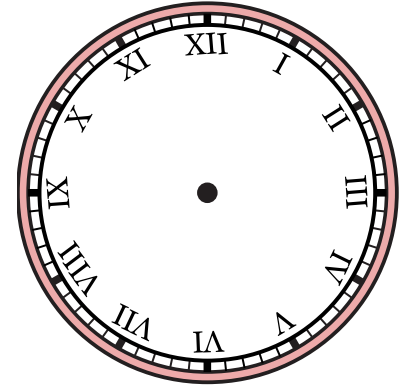
7) 3:32



8) 4:00



9) 5:33



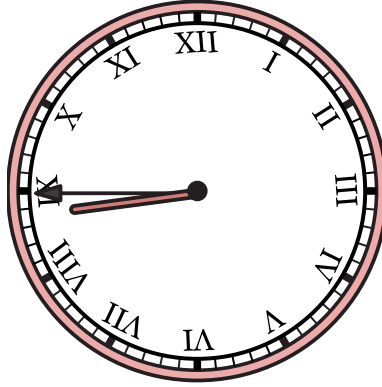


Draw the hour and minute hand on the clocks so they represent the time shown.

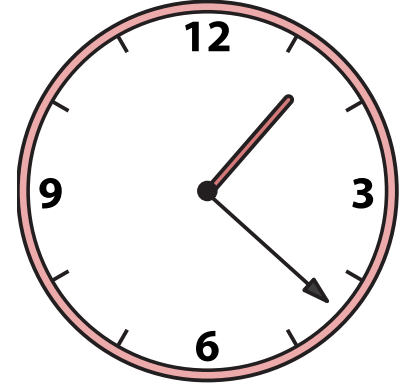
1) 11:50



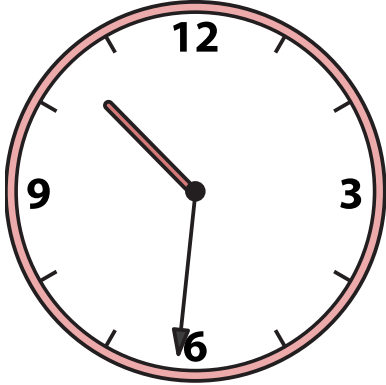
2) 8:45



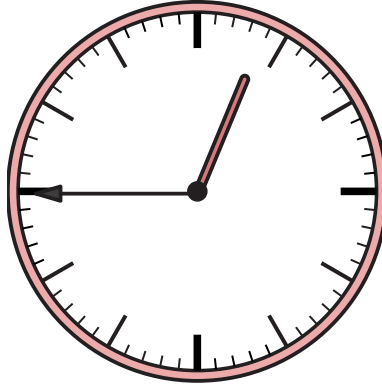
3) 1:22



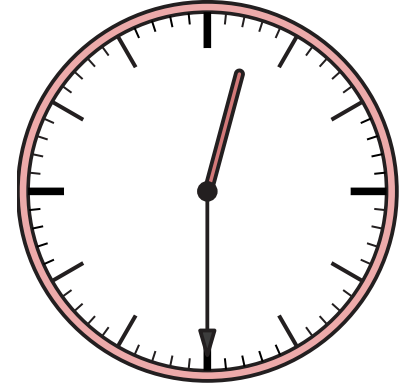
4) 10:31



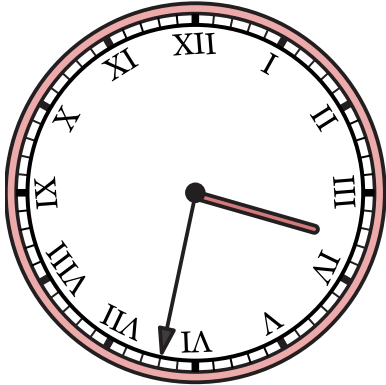
5) 12:45



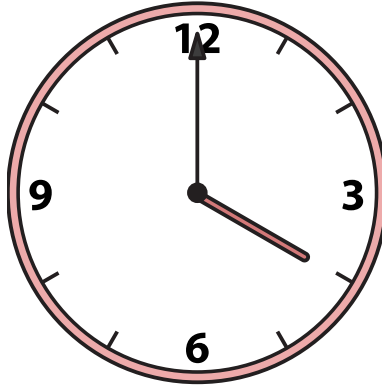
6) 12:30



7) 3:32



8) 4:00



9) 5:33

