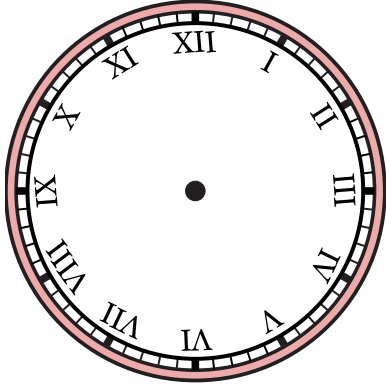


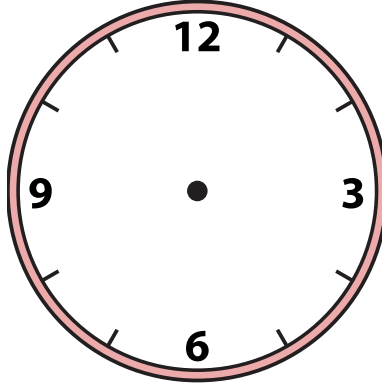


Draw the hour and minute hand on the clocks so they represent the time shown.

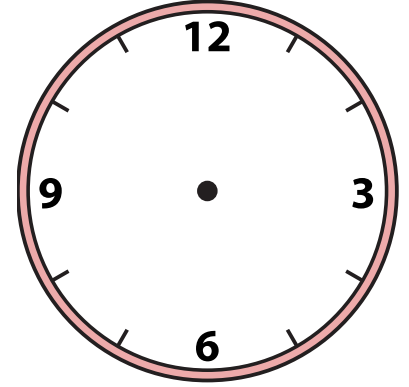
1) 9:45



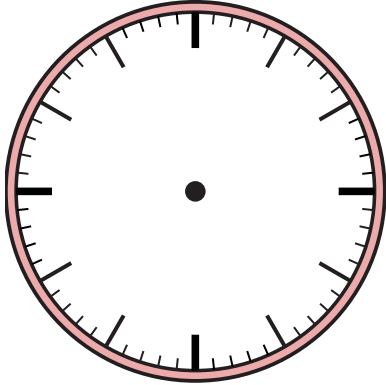
2) 5:55



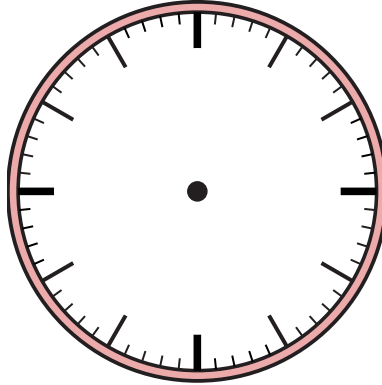
3) 9:06



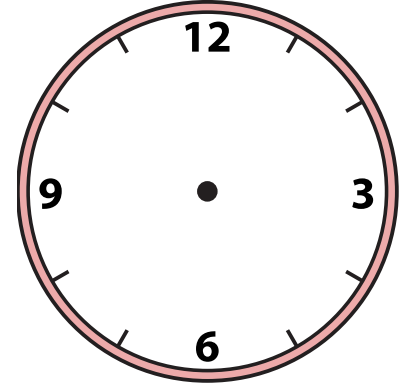
4) 12:01



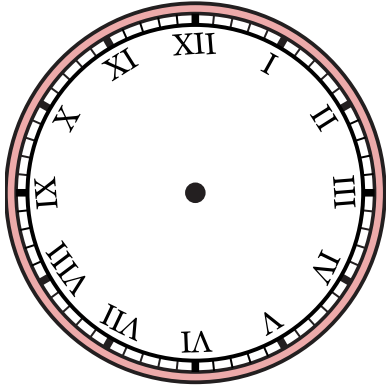
5) 7:17



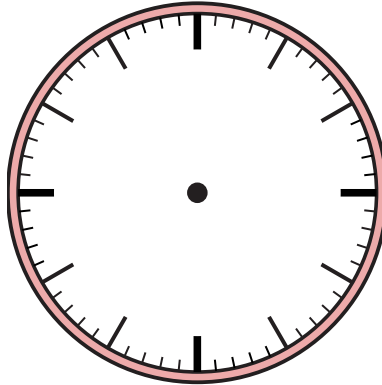
6) 2:10



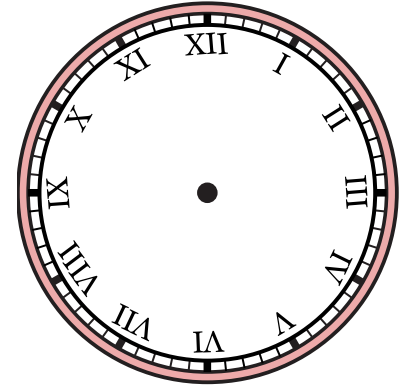
7) 7:02



8) 7:36



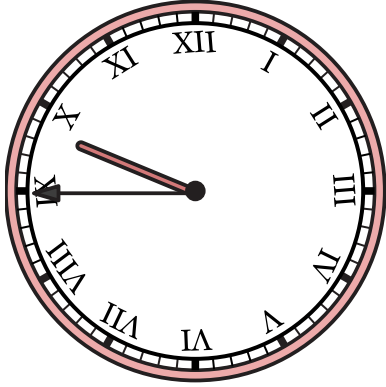
9) 5:32



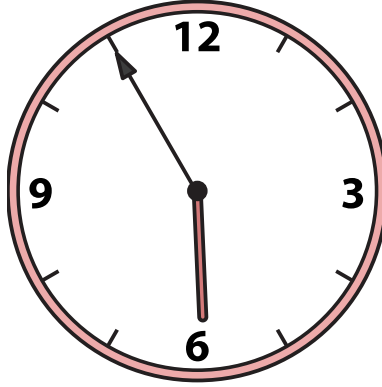


Draw the hour and minute hand on the clocks so they represent the time shown.

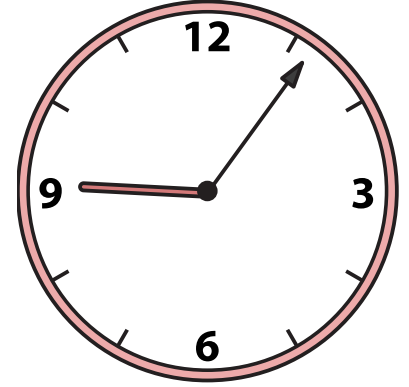
1) 9:45



2) 5:55



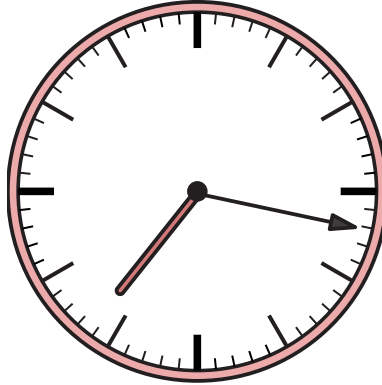
3) 9:06



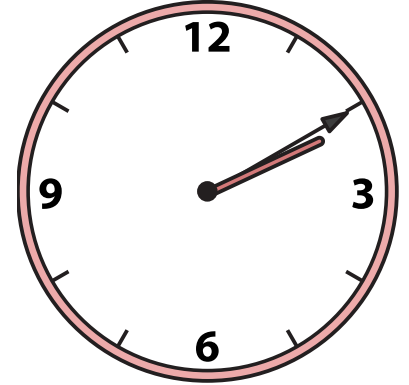
4) 12:01



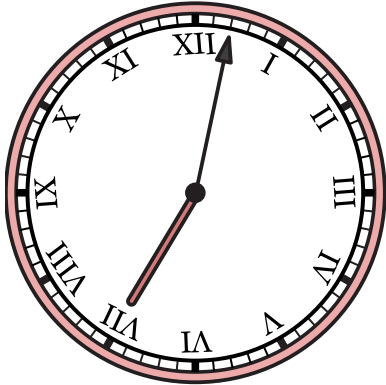
5) 7:17



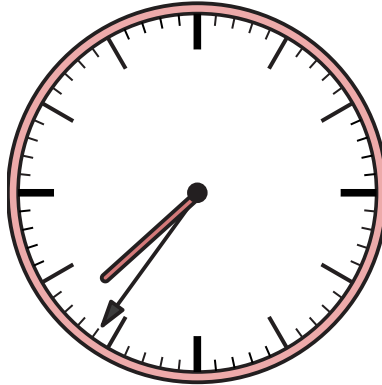
6) 2:10



7) 7:02



8) 7:36



9) 5:32

