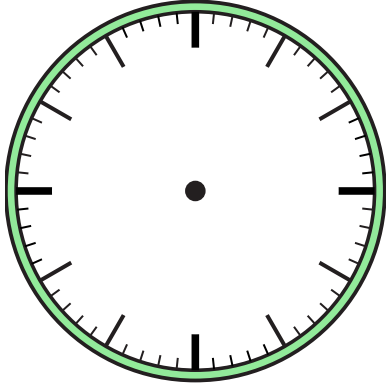


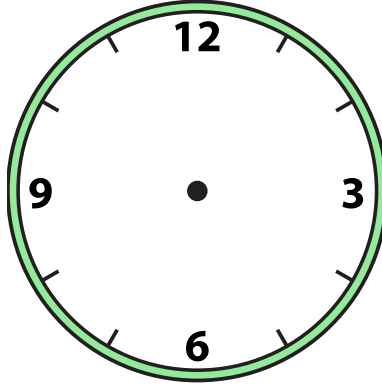


Draw the hour and minute hand on the clocks so they represent the time shown.

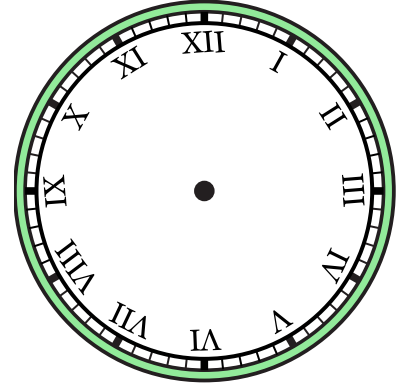
1) 7:30



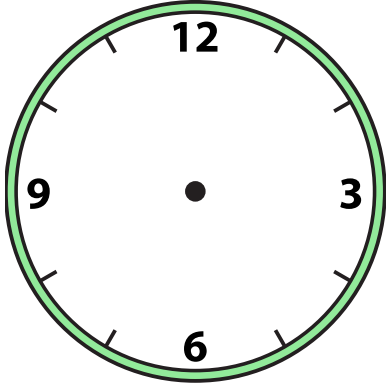
2) 12:00



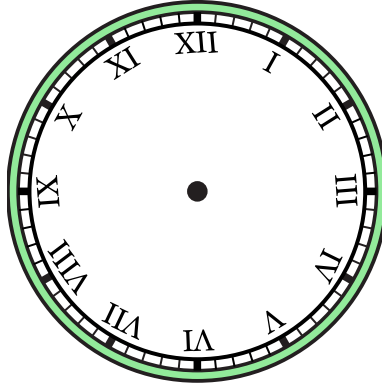
3) 4:30



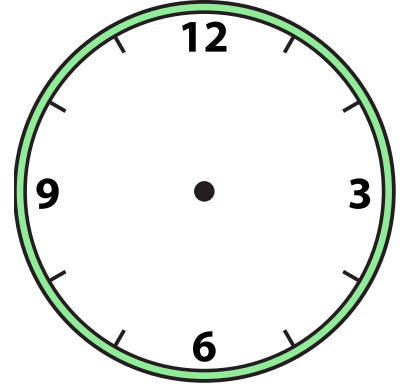
4) 6:30



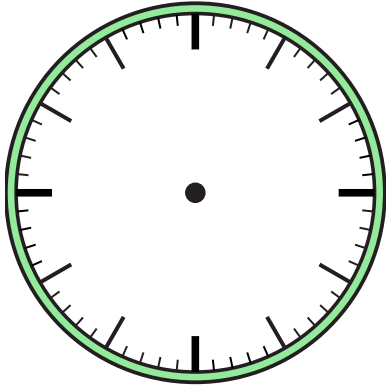
5) 6:00



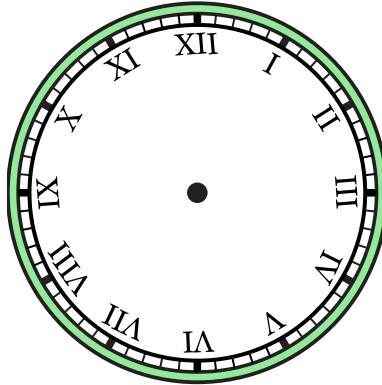
6) 5:00



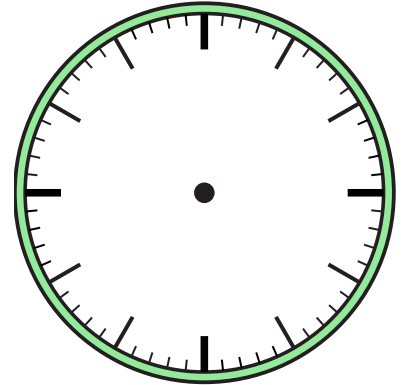
7) 2:30



8) 12:30



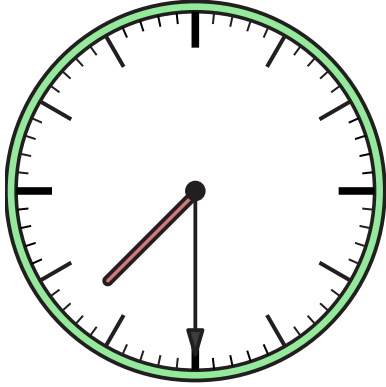
9) 8:00



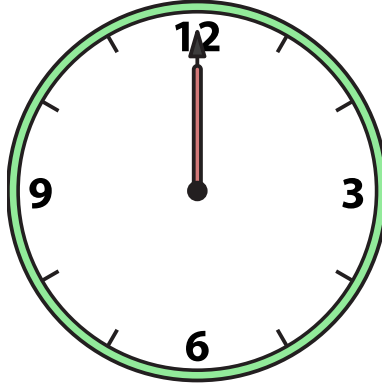


Draw the hour and minute hand on the clocks so they represent the time shown.

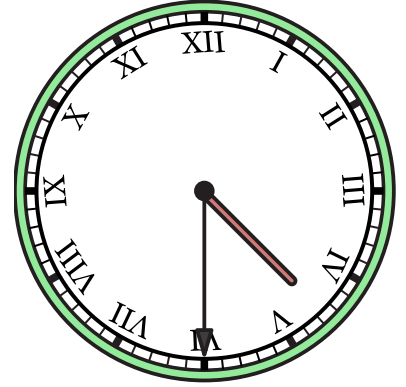
1) 7:30



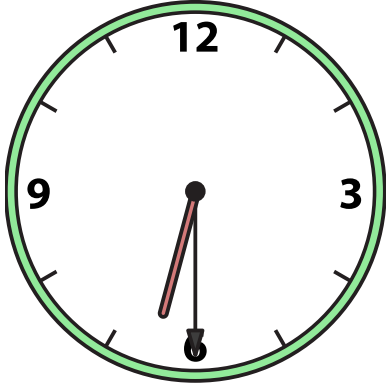
2) 12:00



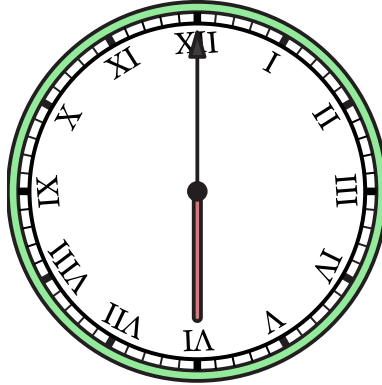
3) 4:30



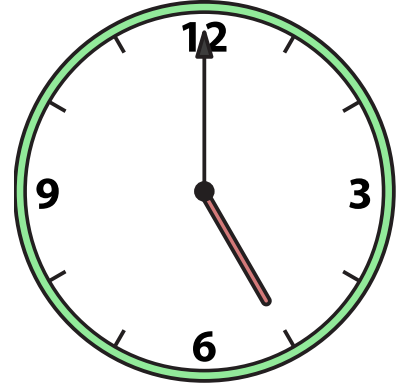
4) 6:30



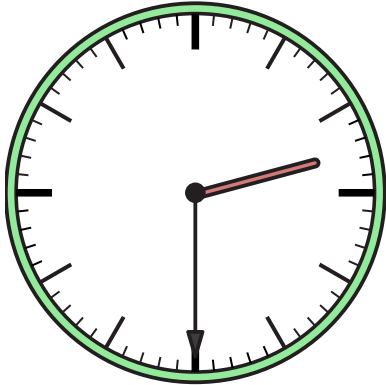
5) 6:00



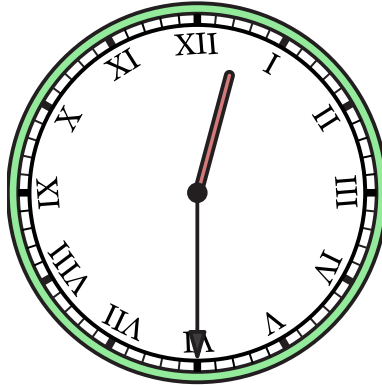
6) 5:00



7) 2:30



8) 12:30



9) 8:00

